

Huayu Industry Co. Ltd

Tel/Fax: 86-532-58983889
Email: infohuayuindustry@gmail.com

BS4504 FLANGES

BS4504: Section 3.1 : 1989

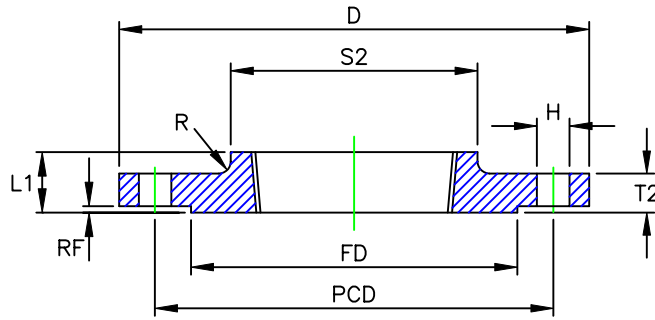
PN2.5, PN6, PN10, PN25 & PN40

BS4504: Part 1 : 1969

**PN64, PN100, PN160, PN250,
PN320 & PN400**

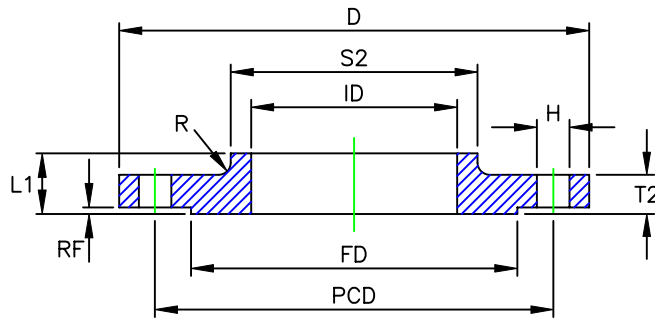
BS4504: Section 3.1:1989
PN2.5, PN6 & PN10 Flanges

Code 113
(PN6 Only)
(6/4, 10/4)



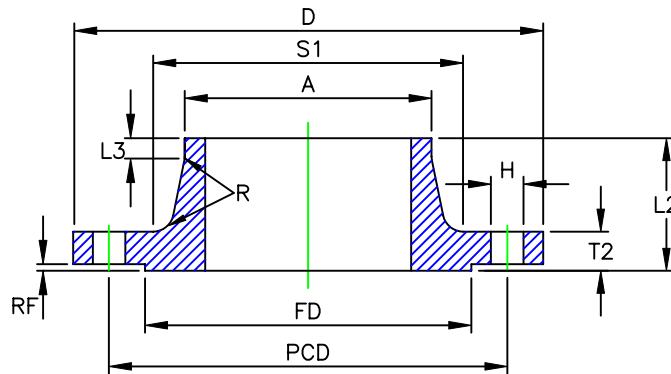
**Screwed boss
 Flange**

Code 112
(PN6 Only)
(6/5, 10/5)



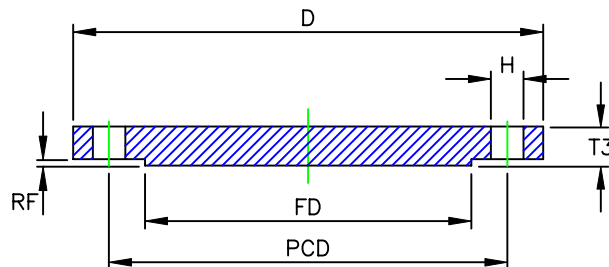
**Slip-on boss
 Flange**

Code 111
(2.5/2, 6/2, 10/2)



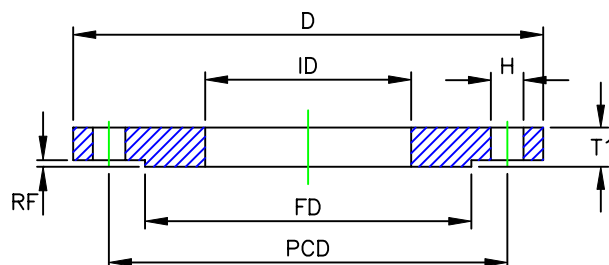
**Weld-neck
 Flange**

Code 105
(6/8, 10/8)



**Plate Blind
 Flange**

Code 101
(2.5/3, 6/3, 10/3)



**Slip-on Plate
 Flange**

Section 4 - Flanges, Fittings and Tube

BS4504: Section 3.1 : 1989

PN2.5 & 6 Flanges

N.B ins	SIZE mm	D	T1	T2	T3	RF	FD	ID	L1	L2	L3	S1	S2	A	PCD	R	H	N° Holes
3/8	10	75	12	12	12	2	35	18.2	20	28	6	26	25	17.2	50	3	11	4
1/2	15	80	12	12	12	2	40	22.4	20	30	6	30	30	21.3	55	3	11	4
3/4	20	90	14	14	14	2	50	27.7	24	32	6	38	40	26.9	65	4	11	4
1	25	100	14	14	14	2	60	234.5	24	35	6	42	50	33.7	75	4	11	4
1 1/4	32	120	16	14	14	2	70	43.2	26	35	6	55	60	42.4	90	5	14	4
1 1/2	40	130	16	14	14	3	80	49.5	26	38	7	62	70	48.3	100	5	14	4
2	50	140	16	14	14	3	90	62	28	38	8	74	80	360.3	110	5	14	4
2 1/2	65	160	16	14	14	3	110	74.7	32	38	9	88	100	43.1	130	6	14	4
3	80	190	18	16	16	3	128	90.7	34	42	10	102	110	88.9	150	6	18	4
4	100	210	18	16	16	3	148	116.1	40	45	10	130	130	114.3	170	6	18	4
5	125	240	20	18	18	3	178	143.8	44	48	10	155	160	139.7	200	6	18	8
6	150	265	20	18	18	3	202	170.7	44	48	12	184	185	168.3	225	8	18	8
8	200	320	22	20	20	3	258	221.5	44	55	15	236	240	219.1	280	8	18	8
10	250	375	24	22	22	3	312	276.4	44	60	15	290	295	273	335	10	18	12
12	300	440	24	22	22	4	365	327.2	44	62	15	342	355	323.9	395	10	22	12
14	350	490	26	22	22	4	415	359.2	-	62	15	385	-	355.6	445	10	22	12
16	400	540	28	22	22	4	465	410.5	-	65	15	438	-	406.4	495	10	22	16
18	450	595	30	24	24	4	520	461.8	-	65	15	492	-	457	550	12	22	16
20	500	645	30	24	24	4	570	513.1	-	68	15	538	-	508	600	12	22	20
24	600	755	32	24	34	5	670	616	-	70	16	640	-	610	705	12	26	20

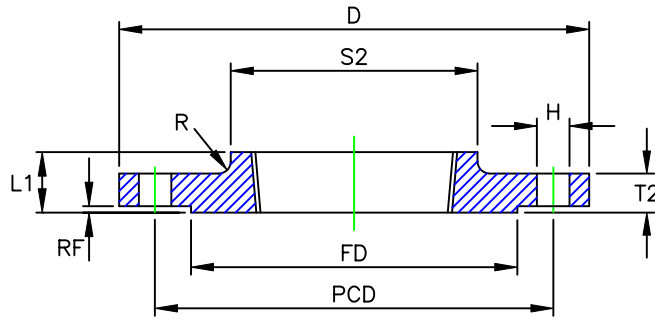
PN10 Flanges

N.B ins	SIZE mm	D	T1	T2	T3	RF	FD	ID	L1	L2	L3	S1	S2	A	PCD	R	H	N° Holes
8	200	340	24	24	24	3	268	221.5	44	62	16	234	246	219.1	295	8	22	8
10	250	395	26	26	26	3	320	276.4	46	68	16	288	298	273	350	10	22	12
12	300	445	26	26	26	4	370	327.2	46	68	16	342	350	32.9	400	10	22	12
14	350	505	28	26	26	4	430	359.2	53	68	16	390	400	355.6	460	10	22	16
16	400	565	32	26	26	4	482	410.5	57	72	16	440	456	406.4	515	10	26	16
18	450	615	36	28	28	4	532	461.8	63	72	16	488	502	457	565	12	26	20
20	500	670	38	28	28	4	585	513.1	67	75	16	540	559	508	620	12	26	20
24	600	780	42	28	34	5	685	616	75	80	18	640	658	610	725	12	30	20

Note: For sizes 10mm-150mm nominal bore use PN10 dimensions

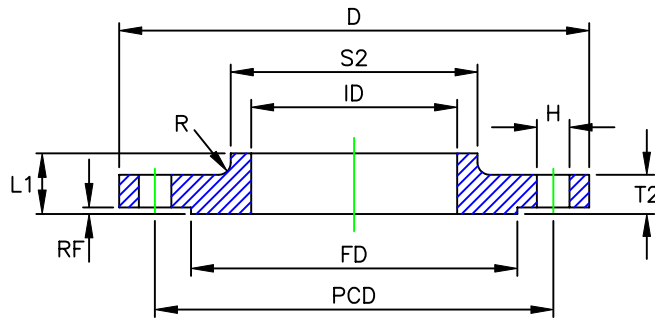
BS4504: Section 3.1:1989
PN16 & PN25 Flanges

Code 113
(16/4)



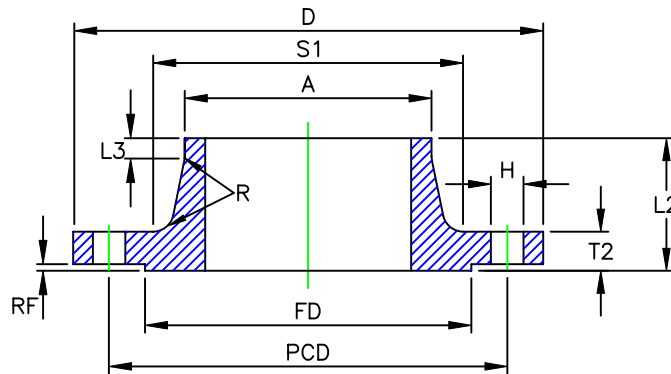
**Screwed boss
 Flange**

Code 112
(16/5, 25/5)



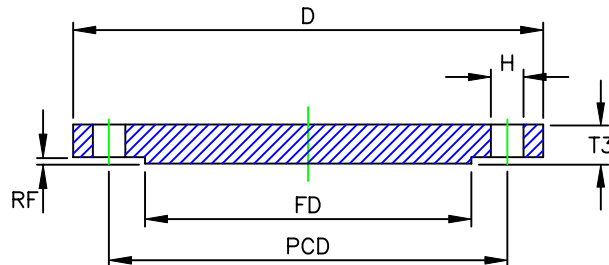
**Slip-on boss
 Flange**

Code 111
(16/2, 25/2)



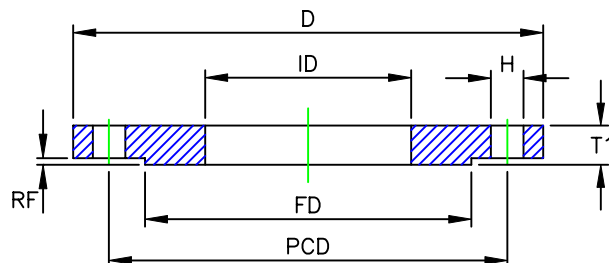
**Weld-neck
 Flange**

Code 105
(16/8, 25/8)



**Plate Blind
 Flange**

Code 101
(16/3, 25/3)



**Slip-on Plate
 Flange**

Section 4 - Flanges, Fittings and Tube

BS4504: Section 3.1 : 1989

PN16 Flanges

N.B ins	SIZE mm	D	T1	T2	T3	RF	FD	ID	L1	L2	L3	S1	S2	A	PCD	R	H	N° Holes
¾	10	90	14	14	14	2	40	18.2	20	35	6	28	30	17.2	60	3	14	4
½	15	95	14	14	14	2	45	22.4	20	35	6	32	35	21.3	65	3	14	4
¾	20	105	16	16	16	2	58	27.7	24	38	6	39	45	26.9	75	4	14	4
1	25	115	16	16	16	2	68	34.5	24	38	6	46	52	33.7	85	4	14	4
1¼	32	140	18	16	16	2	78	43.2	26	40	6	56	60	42.4	100	5	18	4
1½	40	150	18	16	16	3	88	49.5	26	42	7	64	70	48.3	110	5	18	4
2	50	165	20	18	18	3	102	62	28	45	8	74	84	60.3	125	5	18	4
2½	65	185	20	18	18	3	122	74.7	32	45	10	92	104	76.1	145	6	18	4
3	80	200	20	20	20	3	138	90.7	34	50	10	110	118	88.9	160	6	18	8
4	100	220	22	20	20	3	158	116.1	40	52	12	130	140	114.3	180	6	18	8
5	125	250	22	22	22	3	188	143.8	44	55	12	158	168	139.7	210	6	18	8
6	150	285	24	22	22	3	212	170.7	44	55	12	184	195	168.3	240	8	22	8
8	200	340	26	24	24	3	268	221.5	44	62	16	234	246	219.1	295	8	22	12
10	250	405	29	26	26	3	320	276.4	46	70	16	288	298	273	355	10	26	12
12	300	460	32	28	28	4	378	327.2	46	78	16	342	350	323.9	410	10	26	12
14	350	520	35	30	30	4	438	359.2	57	82	16	390	400	355.6	470	10	26	16
16	400	580	38	32	32	4	490	410.5	63	85	16	444	456	406.4	525	10	30	16
18	450	640	42	34	34	4	550	461.8	68	87	16	490	502	457	585	12	30	20
20	500	715	46	34	36	4	610	513.1	73	90	16	546	559	508	650	12	33	20
24	600	840	52	36	44	5	725	616	83	95	18	650	658	610	770	12	36	20

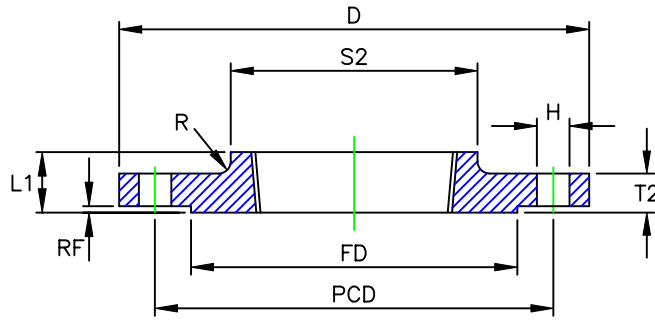
PN25 Flanges

N.B ins	SIZE mm	D	T1	T2	T3	RF	FD	ID	L1	L2	L3	S1	S2	A	PCD	R	H	N° Holes
8	200	360	32	30	30	3	278	221.5	52	80	16	244	256	219.1	310	8	26	12
10	250	425	35	32	32	3	335	276.4	60	88	18	296	310	273	370	10	30	12
12	300	485	38	34	34	4	395	327.2	67	92	18	350	364	323.9	430	10	30	16
14	350	555	42	38	38	4	450	359.2	72	100	20	398	418	355.6	490	10	33	16
16	400	620	46	40	40	4	505	410.5	78	110	20	452	472	406.4	550	10	36	16
18	450	670	50	42	42	4	555	461.8	84	110	20	500	520	457	600	12	36	20
20	500	730	56	44	45	4	615	513.1	90	125	20	558	580	508	660	12	36	20
24	600	845	68	46	54	5	720	616	100	125	20	660	684	610	770	12	39	20

Note: For sizes 10mm-150mm nominal bore use PN40 dimensions

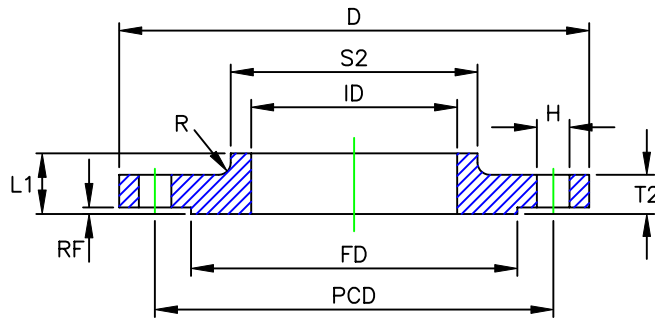
BS4504: Section 3.1:1989
PN40 Flanges

Code 113
(40/4)



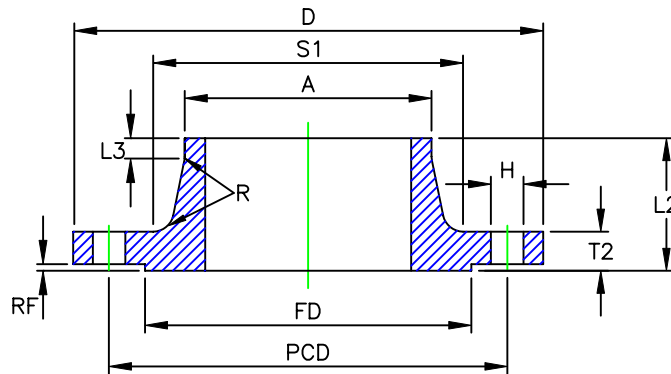
**Screwed boss
Flange**

Code 112
(40/5)



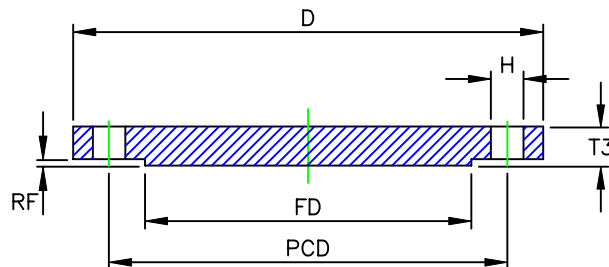
**Slip-on boss
Flange**

Code 111
(40/2)



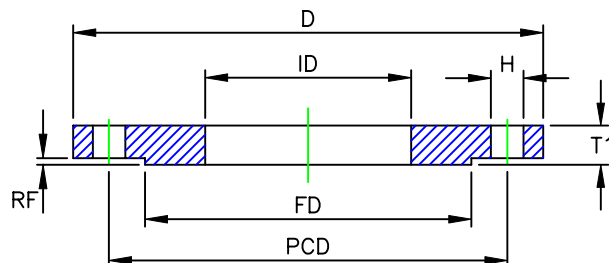
**Weld-neck
Flange**

Code 105
(40/8)



**Plate Blind
Flange**

Code 101
(40/3)



**Slip-on Plate
Flange**

Section 4 - Flanges, Fittings and Tube

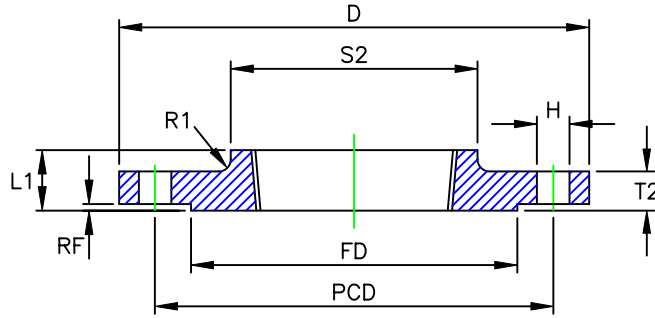
BS4504: Section 3.1 : 1989

PN40 Flanges

N.B ins	SIZE mm	D	T1	T2	T3	RF	FD	ID	L1	L2	L3	S1	S2	A	PCD	R	H	N° Holes
3/8	10	90	14	16	16	2	40	18.2	22	35	6	28	30	17.2	60	3	14	4
1/2	15	95	14	16	16	2	45	22.4	22	38	6	32	35	21.3	65	3	14	4
3/4	20	105	16	18	18	2	58	27.7	26	40	6	40	45	26.9	75	4	14	4
1	25	115	16	18	18	2	68	34.5	28	40	6	46	52	33.7	85	4	14	4
1 1/4	32	140	18	18	18	2	78	43.2	30	42	6	56	60	42.4	100	5	18	4
1 1/2	40	150	18	18	18	3	88	49.5	32	45	7	64	70	48.3	110	5	18	4
2	50	165	20	20	20	3	102	62	34	48	8	74	84	60.3	125	5	18	4
2 1/2	65	185	22	22	22	3	122	74.7	38	52	10	92	104	76.1	145	6	18	8
3	80	200	24	24	24	3	138	90.7	40	58	12	110	118	88.9	160	6	18	8
4	100	235	26	24	24	3	162	116.1	44	65	12	134	145	114.3	190	6	22	8
5	125	270	28	26	26	3	188	143.8	48	68	12	162	170	139.7	220	6	26	8
6	150	300	30	28	28	3	218	170.7	52	75	12	190	200	168.3	250	8	26	8
8	200	375	36	34	34	3	285	221.5	52	88	16	244	260	219.1	320	8	30	12
10	250	450	42	38	38	3	345	276.4	60	105	18	306	312	273	385	10	33	12
12	300	515	48	42	42	4	410	327.2	67	115	18	362	380	323.9	450	10	33	16
14	350	580	54	46	46	4	465	359.2	72	125	20	408	424	355.6	510	10	36	16
16	400	660	60	50	50	4	535	410.5	78	135	20	462	478	406.4	585	10	39	16
18	450	685	66	50	54	4	560	461.8	84	135	20	500	522	457	610	12	39	20
20	500	755	72	52	56	4	615	513.1	90	140	20	562	576	508	670	12	42	20
24	600	890	84	60	70	5	735	616	100	150	20	666	686	610	795	12	48	20

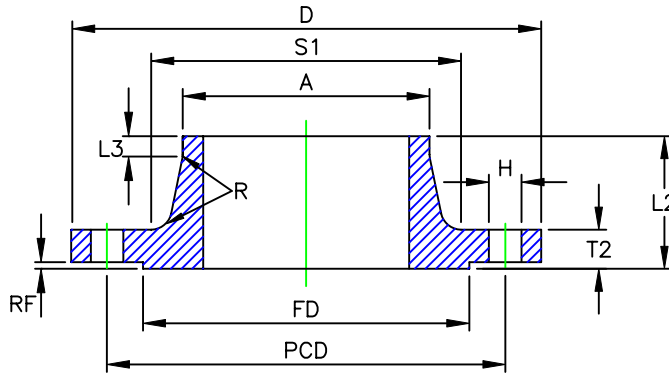
BS4504: Section 3.1:1969
PN64 & PN100 Flanges

64/4
100/4



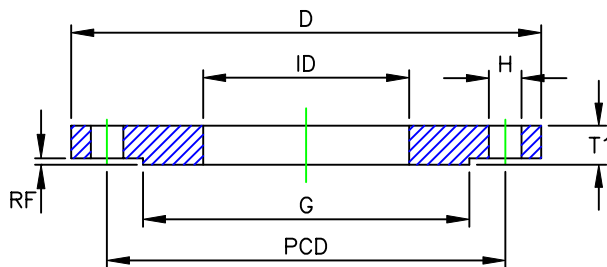
**Scaled boss
 Flange**

64/2
100/2



**Weld-neck
 Flange**

64/3
100/3



**Slip-on Plate
 Flange**

Section 4 - Flanges, Fittings and Tube

BS4504: Section 3.1 : 1969

PN64 Flanges

N.B ins	SIZE mm	D	T1	T2	RF	FD	ID	L1	L2	L3	S1	S2	A	PCD	R	R1	H	N° Holes
2	50	180	26	26	3	102	62	36	62	10	82	90	60.3	135	6	3	22	4
2½"	65	205	26	26	3	122	74.7	40	68	12	98	112	76.1	160	6	3	22	8
3	80	215	30	28	3	138	90.7	44	72	12	112	125	88.9	170	8	3	22	8
4	100	250	32	30	3	162	116.1	52	78	12	138	152	114.3	200	8	3	26	8
5	125	295	34	34	3	188	143.8	56	88	12	168	185	139.7	240	8	3	30	8
6	150	345	36	36	3	218	170.7	60	95	12	202	215	168.3	280	10	3	33	8
7	175	375	40	40	3	260	-	-	105	16	228	-	193.7	320	10	-	33	12
8	200	415	46	42	3	285	221.5	-	110	16	256	-	219.1	345	10	-	36	12
10	250	470	54	45	3	345	276.4	-	125	18	316	-	273	400	12	-	36	12
12	300	530	62	52	4	410	327.2	-	140	18	372	-	323.9	460	12	-	36	16
14	350	600	72	56	4	465	359.2	-	150	20	420	-	355.6	525	12	-	39	16
16	400	670	78	60	4	535	410.5	-	160	20	475	-	406.4	585	12	-	42	16

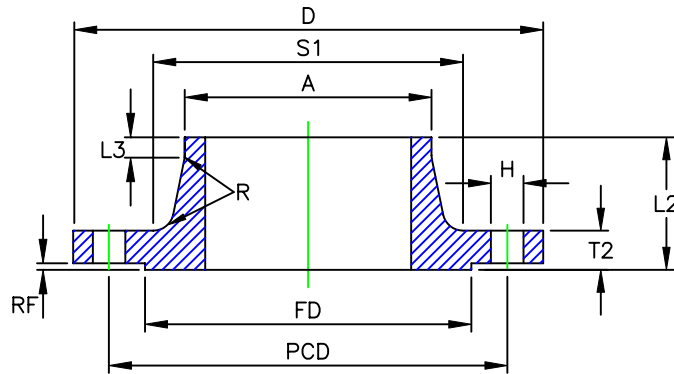
Note: For sizes 10mm-40mm nominal bore use PN100 dimensions

PN100 Flanges

N.B ins	SIZE mm	D	T1	T2	RF	FD	ID	L1	L2	L3	S1	S2	A	PCD	R	R1	H	N° Holes
⅜	10	100	20	20	2	40	18.2	28	45	6	32	40	17.2	70	4	2	14	4
½	15	105	20	20	2	45	22.4	28	45	6	34	43	21.3	75	4	2	14	4
¾	20	130	22	22	2	58	27.7	30	58	8	42	52	26.9	90	4	2	18	4
1	25	140	24	24	2	68	34.5	32	58	8	52	60	33.7	100	4	3	18	4
1¼	32	155	24	24	2	78	43.2	32	60	8	62	68	42.4	110	6	3	22	4
1½	40	170	26	26	3	88	49.5	34	62	10	70	80	48.3	125	6	3	22	4
2	50	195	28	28	3	102	62	36	68	10	90	95	60.3	145	6	3	26	4
2½	65	220	30	30	3	122	74.7	40	76	12	108	118	76.1	170	6	3	26	8
3	80	230	34	32	3	138	90.7	44	78	12	120	130	88.9	180	8	3	26	8
4	100	265	36	36	3	162	116.1	52	90	12	150	158	114	210	8	3	30	8
5	125	315	42	40	3	188	143.8	56	105	12	180	188	139	250	8	3	33	8
6	150	355	48	44	3	218	170.7	60	115	12	210	225	168	290	10	3	33	12
7	175	385	54	48	3	260	-	-	127	16	245	-	193	320	10	-	33	12
8	200	430	60	52	3	285	221.5	-	130	16	278	-	219	360	10	-	36	12
10	250	505	72	60	3	345	276.4	-	157	18	340	-	273	430	12	-	39	12
12	300	585	84	68	4	410	327.2	-	170	18	400	-	323	500	12	-	42	16
14	350	655	95	74	4	465	359.2	-	189	20	460	-	355	560	12	-	48	16
16	400	715	106	-	4	535	410.5	-	-	-	-	-	-	620	-	-	48	16
20	450	870	128	-	4	615	461.8	-	-	-	-	-	-	760	-	-	56	20

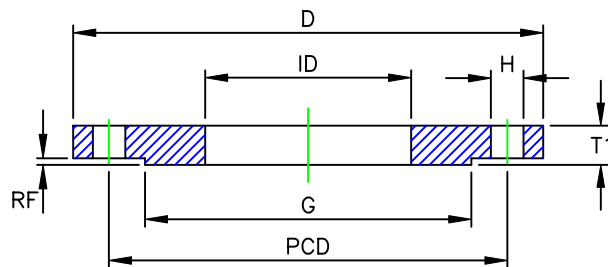
BS4504: Section 3.1:1969
PN160 & PN250 Flanges

160/2
250/2



**Weld-neck
Flange**

160/3
250/3



**Slip-on Plate
Flange**

Section 4 - Flanges, Fittings and Tube

BS4504: Section 3.1 : 1969

PN160 Flanges

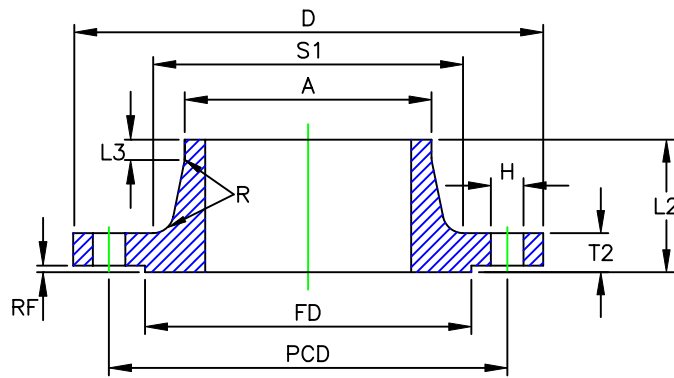
N.B ins	SIZE mm	D	T1	T2	RF	FD	ID	L2	L3	S1	A	PCD	R	H	N° Holes
3/8	10	100	22	20	2	18.2	40	45	6	32	17.2	70	4	14	4
1/2	15	105	24	20	2	22.4	45	45	6	34	21.3	75	4	14	4
3/4	20	130	26	22	2	27.7	58	58	8	42	26.9	90	4	18	4
1	25	140	26	24	2	34.5	68	58	8	52	33.7	100	4	18	4
1 1/4	32	155	28	26	2	43.2	78	60	8	55	42.4	110	6	22	4
1 1/2	40	170	30	28	3	49.5	88	64	10	70	48.3	125	6	22	4
2	50	195	34	30	3	62	102	75	10	90	60.3	145	6	26	4
2 1/2	65	220	36	34	3	74.7	122	82	12	108	76.1	170	6	26	8
3	80	230	40	36	3	90.7	138	86	12	120	88.9	180	8	26	8
4	100	265	44	40	3	116.1	162	100	12	150	114.3	210	8	30	8
5	125	315	54	44	3	143.8	188	115	14	180	139.7	250	8	33	8
6	150	355	62	50	3	170.7	218	128	14	210	168.3	290	10	33	12
7	175	390	68	54	3	-	260	138	16	245	193.7	320	10	36	12
8	200	430	76	60	3	221.5	285	140	16	278	219.1	360	10	36	12
10	250	515	90	68	3	276.4	345	155	18	340	273	430	12	42	12
12	300	585	106	78	4	327.2	410	175	18	400	323.9	500	12	42	16

PN250 Flanges

N.B ins	SIZE mm	D	T2	RF	FD	ID	L2	L3	S1	A	PCD	R	H	N° Holes
1/2	15	130	26	2	45	22.4	60	6	48	21.3	90	4	18	4
3/4	20	135	28	2	58	27.7	65	6	55	26.9	95	4	18	4
1	25	150	28	2	68	34.5	65	8	60	33.7	105	4	22	4
1 1/4	32	165	32	2	78	43.2	75	8	74	42.4	120	6	22	4
1 1/2	40	185	34	3	88	49.5	80	10	84	48.3	135	6	26	4
2	50	200	38	3	102	62	85	10	95	60.3	150	6	26	8
2 1/2	65	230	42	3	122	74.7	95	12	124	76.1	180	6	26	8
3	80	255	46	3	138	90.7	102	12	136	101.6	200	8	30	8
4	100	300	54	3	162	116.1	120	14	164	127	235	8	33	8
5	125	340	60	3	188	143.8	140	16	200	152.4	275	8	33	12
6	150	390	68	3	218	170.7	160	18	240	177.8	320	10	36	12
7	175	430	74	3	260	-	170	22	270	219.1	355	10	39	12
8	200	485	82	3	285	221.5	190	25	305	244.5	400	10	42	12
10	250	585	100	3	345	276.4	215	30	385	298.5	490	12	48	16

BS4504: Section 3.1:1969
PN320 & PN400 Flanges

320/2
400/2



**Weld-neck
Flange**

Section 4 - Flanges, Fittings and Tube

BS4504: Section 3.1 : 1969

PN320 Flanges

N.B ins	SIZE mm	D	T2	RF	FD	L2	L3	S1	A	PCD	R	H	N° Holes
$\frac{3}{8}$	10	125	24	2	40	58	6	44	17.2	85	4	18	4
$\frac{1}{2}$	15	130	26	2	45	60	6	48	21.3	90	4	18	4
$\frac{3}{4}$	20	150	30	2	58	72	6	58	26.9	105	4	22	4
1	25	160	34	2	68	78	8	68	33.7	115	4	22	4
1 $\frac{1}{4}$	32	180	36	2	78	84	8	78	42.4	130	6	26	4
1 $\frac{1}{2}$	40	195	38	3	88	88	10	92	48.3	145	6	26	4
2	50	210	42	3	102	100	10	106	63.5	160	6	26	8
2 $\frac{1}{2}$	65	255	51	3	122	120	12	138	88.9	200	6	30	8
3	80	275	55	3	138	130	14	156	101.6	220	8	30	8
4	100	335	65	3	162	145	16	186	139.7	265	8	36	8
5	125	380	75	3	188	175	20	230	168.3	310	8	36	12
6	150	425	84	3	218	195	25	265	193.7	350	10	39	12
7	175	485	95	3	260	215	28	308	219.1	400	10	42	12
8	200	525	103	3	285	235	30	345	244.5	440	10	42	16
10	250	640	125	3	345	300	40	428	323.8	540	12	52	16

PN400 Flanges

N.B ins	SIZE mm	D	T2	RF	FD	L2	L3	S1	A	PCD	R	H	N° Holes
$\frac{3}{8}$	10	125	28	2	40	65	8	48	17.2	85	4	18	4
$\frac{1}{2}$	15	145	30	2	45	68	8	56	26.9	100	4	22	4
$\frac{3}{4}$	20	160	34	2	58	78	8	72	33.7	115	4	22	4
1	25	180	38	2	68	90	10	82	42.4	130	4	26	4
1 $\frac{1}{4}$	32	205	44	2	78	100	10	90	48.3	150	6	30	4
1 $\frac{1}{2}$	40	220	48	3	88	110	12	106	60.3	165	6	30	4
2	50	235	52	3	102	120	15	120	76.1	180	6	30	8
2 $\frac{1}{2}$	65	290	64	3	122	135	18	158	101.6	225	6	33	8
3	80	305	68	3	138	150	20	174	114.3	240	8	33	8
4	100	370	80	3	162	175	25	216	139.7	295	8	39	8
5	125	415	92	3	188	200	30	258	193.7	340	8	39	12
6	150	475	105	3	218	225	35	302	219.1	390	10	42	12
8	200	585	130	3	285	280	40	388	273	490	10	48	16